



# Lower Columbia Walleye Club

May '10

Volume 16.5

## TIPS & TACTICS

BY STAN FAGERSTROM



### Stop Knots Can Help Make 'Em Bite

Part 2

The bass fishing was spotty. My partner and I had been getting a fish now and then but it wasn't what I'd come to expect when I was fishing on Mexico's Lake El Salto

Our guide pointed to an area a couple of hundred yards away and then lifted our anchor into the boat. I hooked up a new 5-inch Swimming Senko plastic worm as we moved.

I missed a fish on my first cast into the new stretch of water. I noted that my companion was making some changes. I wasn't sure what he was up to. "What are you going to throw at 'em?" I asked.

"I'm still going to use the same Senko you're using," he said, "but I'm going to put a Smile Blade out



*Stop Knots enable to an angler to rig up in different ways. Note how this one has been attached to a leader above a Smile Blade. When the angler using it is ready to cast the Stop Knot will keep the bead and Smile Blade from riding too high up the line. It also keeps the beads and blades in place during the retrieve.*

in front of it."

My partner that day was Bob Schmidt, the general manager of Mack's Lure. I wasn't surprised that he'd decided to use a Smile Blade with his plastic worm. I'd done the same thing on occasions.

Bob cast and---wham! Fish on! After he'd done that three more times while I went fishless I decided maybe I'd be wise to do the same thing. I did but I ran into an immediate problem. I had put beads, as Bob had done, both above and below the Smile Blade I'd attached ahead of my Senko. The problem was when I reeled in the small bead ahead of my Smile Blade wedged in my rod guides and that boogered things up when I tried to cast.

This had happened a couple of times when Bob tapped me on the shoulder. "Here," he said, "slide this Stop Bobber onto your leader so it's positioned above the top bead. That will keep the bead from riding farther up your line as you cast."

He was right and that's not the end of the story. Once I got re-rigged so I had things as Bob did, we started keeping track of how many fish we could catch in a row. We wound up in one stretch that morning boating 19 fish out of 20 casts. The largest weighed 7-pounds, 8-ounces. Nearly all of the others we caught during that one period topped at least 2-pounds.

(Continued on Page 2)

(Continued from Page 1)



*Bob Schmidt took this dandy bass the last time he fished Mexico's Lake El Salto. Note the Smile Blade he used in front of the Swimming Senko he was fishing.*

That's about as fast as the bass fishing's going to get even at a lake with the wondrous productivity of Lake El Salto. The combination of a Smile Blade fished with a slow retrieve just ahead of a Swimming Senko was red hot.

Hot as it was we'd not have boated and released all those fish nearly as easily if we hadn't had those handy little Mack's Lure Stop Knots to keep the beads and our Smile Blades where they should be in front of our worms.

"Stop Knots," Schmidt says, "were designed to use with slip bobbers. They let the angler set

and quickly change the depth at which his lure is working beneath his bobber. I also love to use them to keep my Smile Blades in position if I want to use them with different lures."

As I mentioned in my previous column, there are numerous other areas of angling activity where Stop Knots can be of equal or even more importance. Anglers today are using them for everything from salmon and steelhead fishing to help in catching panfish.

In my last column I touched on the Stop Knot's use along with a slip bobber for crappie fishing. This

can be a tremendous asset where crappies are concerned. Get into crappie fishing and you'll eventually discover it's next to impossible to fish a lure too slowly for these good eating panfish.

If I don't know for sure where crappies are located I'll troll or cast a variety of panfish lures until I find where the school is holding. Once I get it pinpointed, I'll anchor and start using an outfit I've rigged with a slip bobber and a Stop Knot.

Once my electronics help me establish the depth at which the fish are holding, I'll make the necessary adjustment of my Stop Knot. When I cast I know my Stop Knot will position my float so my lure gets down where I want it to be.

My retrieve, if you can even call it that, is to simply let the bobber move up and down with whatever wave action there is on the surface. If nothing develops, I'll very slowly inch the bobber back toward the boat a couple of feet and rest it again. Don't be surprised if the bobber starts moving when it's just setting there because it's a cinch to happen. Again---you usually just can't fish too slowly if it's crappie you're after.

You'll find this approach especially helpful if you have youngsters with you. If a little boy or girl can't yet handle a rod well enough to cast, do it for them. Once you get the slip bobber and lure out where it needs to be, hand them the rod.

Even younger anglers can usually hold the rod, turn the reel handle a little from time to time and learn to watch the bobber do its thing when a crappie comes along.

As I also mentioned before, you'll find Stop Knots in two different colors shown in the new Mack's Lure 2010 calendar. If you're not



*Look close and you can see the pink colored Stop Knot Schmidt has attached to his leader above his bead and Smile Blade. Positioned where it is, the Stop Knot keeps everything in place on either the cast or the retrieve.*

already using these excellent little accessories, you're missing a bet.

I can say that from experience because I overlooked them for a time myself. That's a mistake I'll not make in the future.



## Limit Your Kill



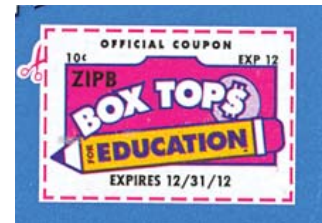
## Don't Kill Your Limit



Louise Moudy wit a couple of nice walleye caught during the last club fishout at Maryhill.



*A Stop Knot is a wondrous accessory for the angler after crappies. It lets you use a bobber along with whatever bait or lure is required. Fishing a lure beneath a bobber permits the slow presentation often required for successful crappie catching.*



Don't forget to save the coupons from the boxtops of many products. They are for a great cause. They will help obtain school equipment for a grade school.

The coupons can be give to Larry McClintock at the meeting or you can mail them to:

Larry MCclintock  
PO Box 30454  
Portland, OR 97294

If you have questions call Larry at 503-257-0553



Lower Columbia Walleye Club, Inc.  
 Portland, Oregon  
**Top Ten Big Fish**  
**2010**

**President**  
 Lyle Amundson  
 (503) 625-6296  
 twondcomets@yahoo.com

**Activities Chairman**  
 Don Merrill  
 (503) 667-9169  
 armagl7@gmail.com

**Vice President**  
 Frank Byran  
 (503) 728-4533

**Activities Co-Chairmen**  
 Sam Caliva  
 1 (503) 370-8439  
 avilac@q.com

**Secretary**  
 Tom Schindlbeck  
 (360) 687-5898  
 schindlbec@aol.com

Ron DeShais  
 (503) 531-0981  
 rddeshais@verizon.net

**Treasurer**  
 Jim Gurtisen  
 (503) 492-2338  
 tvcc@easystreet.net

**Club Meeting Place**  
 Eastside Free Methodist Church,  
 650 SE 139th Ave,  
 Portland, Oregon  
 300 feet South of Stark on 139th

|                 |              |
|-----------------|--------------|
| Matt Bryan      | 12.25 Pounds |
| Chad Williamson | 11.38 Pounds |
| Dan Tuinstra    | 10.81 Pounds |
| Nels Larson     | 9.50 Pounds  |
| Bill Schumacher | 8.88 Pounds  |
| Jim Gurtisen    | 6.80 Pounds  |
| Sam Caliva      | 6.50 Pounds  |

**Editor**  
 Larry McClintock  
 (503) 257-0553  
 E-Mail: lwmclintock@comcast.net

Club Dues are due January 1st and  
 expire December 31st of each  
 year.



**Membership Chairman**  
 Louise Moudy  
 (503) 658-2097  
 roudy1@msn.com

**New Member Dues**  
 Individual \$30.00 per year  
 Family \$50.00 per year

**Website**  
 Bruce Dixon  
 (503) 648-5108  
 carvingfish@yahoo.com

**Renewable Dues**  
 Individual \$25.00 per year  
 Family \$40.00 per year  
 Lifetime Member \$250.00  
 Lifetime Family \$300.00

Make all checks payable to:  
 Lower Columbia Walleye Club, Inc.,  
 PO Box 30454, Portland, OR 97294  
<http://www.lowercolumbiawalleyeclub.com>



*Take a kid fishing  
 Today Before  
 Tomorrow Becomes  
 Yesterday*

# Do I Smell



## Food?

### Soft Fish Tacos with Guacamole and South American Slaw

#### Slaw

8 ounces jicama, peeled and coarsely shredded  
1 medium carrot, coarsely shredded  
1 small red bell pepper, stem and seeds removed, thinly sliced  
1 small red onion, halved lengthwise and thinly sliced crosswise  
2 tablespoons extra-virgin olive oil  
2 tablespoons fresh lime juice  
1/2 teaspoon granulated sugar  
1/4 teaspoon ground cumin  
1/4 teaspoon kosher salt  
1/4 teaspoon ground black pepper

#### Guacamole

2 large Hass avocados, mashed  
1 tablespoon finely chopped fresh cilantro leaves  
2 teaspoons fresh lime juice  
2 teaspoons minced garlic  
1/2 teaspoon kosher salt  
1/4 teaspoon ground black pepper

4 halibut fillets, each about 8 ounces and 3/4 inch thick  
Extra-virgin olive oil  
1 teaspoon ancho chile powder

1/2 teaspoon kosher salt  
1/4 teaspoon ground black pepper

8 flour tortillas (8 inches)

1. In a medium bowl combine the slaw ingredients.

2. In a medium bowl combine the guacamole ingredients and stir with a fork until thoroughly blended. Cover the surface with plastic wrap until ready to use.

3. Prepare the grill for direct cooking over high heat (450° to 550°F).

4. Lightly brush the halibut all over with oil and season with the chile powder, salt, and pepper. Brush the cooking grates clean. Grill the fillets over direct high heat, with the lid closed as much as possible, until the flesh just begins to flake when you poke it with the tip of a knife, 6 to 8 minutes, turning once. Remove from the grill and break into 1-inch pieces.

5. Heat the tortillas over direct high heat for about 20 seconds per side. For each taco, layer a warm tortilla with fish, slaw, and guacamole. Roll up loosely. Serve warm.



### Bone In Rib Eye Steaks with Sweet, Pan-Roasted Garlic

Serves: 4

Prep time: 10 minutes, plus about 20 minutes for the garlic

Grilling time: 6 to 8 minutes

25 garlic cloves, peeled  
1/8 teaspoon crushed red pepper flakes  
1/2–1 cup extra-virgin olive oil  
4 bone-in rib-eye steaks, each 10

to 12 ounces and about 1 inch thick, trimmed of excess fat

Sea salt

Ground black pepper

1. In a small saucepan over low heat, combine the garlic and red pepper flakes with 1/2 to 1 cup of oil, making sure you have enough oil to cover the garlic cloves. Cook at a low simmer until the garlic starts to brown, about 20 minutes. Remove the pan from the heat and allow the garlic to cool in the oil. The garlic will continue to soften and brown until the oil cools. Set aside.

2. Pour 1/4 cup of the garlic oil onto a sheet pan. Dredge the steaks through the oil, coating both sides. Season evenly with salt and pepper. Allow the steaks to stand at room temperature for 15 to 30 minutes before grilling.

3. Prepare the grill for direct cooking over high heat (450° to 550°F).

4. Brush the cooking grates clean. Grill the steaks over direct high heat, with the lid closed as much as possible, until cooked to your desired doneness, 6 to 8 minutes for medium rare, turning once or twice (if flare-ups occur, move the steaks temporarily over indirect heat). Remove from the grill and let rest for 3 to 5 minutes.

5. Serve the steaks warm, topped with a generous sprinkling of salt and some garlic. Spoon some of the garlic oil over the steaks, if desired.





## Do you need to replace your Trailer Tires?

Did you know that your Trailer Tires may be worn out even though they still have plenty of tread left? This is because trailer tires have to carry a lot of weight all the time, even when not in use. It is actually better for the tire to be rolling down the road than to sit still. During use the tire releases lubricants that are beneficial to tire life. Using the Trailer Tires often also helps prevent flat spots from developing on the tire.

If one tire fails, the remaining tires will have to suddenly compensate by supporting the increased load the failed tire was carrying. This sudden increase of weight may overload the other tires causing a chain reaction blowout or other internal damage. If you have experienced a blowout, make sure you check the other tires for damage and/or take your tires to a local tire shop for evaluation by the experts.

The main cause of tire failure is underinflation. Check your tires at least once a month for proper inflation levels. Carlisle Tire and Wheel recommends adjusting the air pressure to the Maximum pounds per square inch (PSI) listed on the sidewall of the tire.

If you inflate the tires to less than the maximum inflation level, you dramatically reduce the load carrying capacity of the tire.

Tires are not completely impervious to air loss; in fact tires can lose 1 to 3 PSI per month. This is because molecules of air under pressure weave their way from the inside of the tire through the rubber to the outside. A drop in air pressure could cause the tire to become overloaded, leading to excessive heat build up. If a Trailer Tire is under-inflated even for a short period of time, the tire could suffer internal damage. The Rubber Manufacturing Association (RMA) states that a tire run at less than 80% of the maximum inflation could cause damage to the tire. Again, if you feel that your tires have been run underinflated have them checked professionally at a local tire service center. High speed towing in hot conditions degrades Trailer Tires significantly. As heat builds up during driving, the tire's internal structure starts to breakdown compromising the strength of the tire. It is recommended to not exceed 60 Miles per hour (MPH) while towing a trailer.

3 to 5 years is the average life expectancy of a Trailer Tire. After three years you should consider replacing your Trailer tires with new ones even if the tires have adequate tread depth left. After five years Trailer Tires are considered worn out and should be replaced.

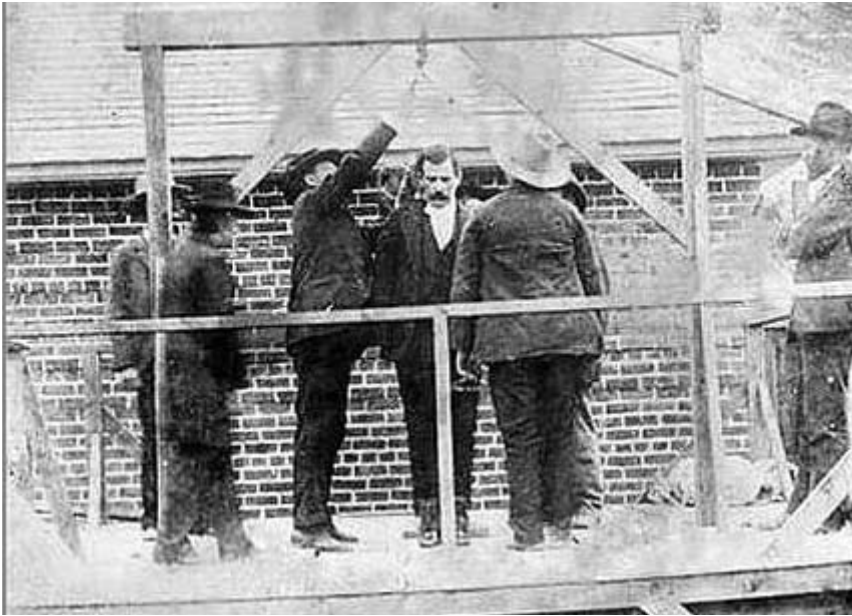
Imagine staying in the sunlight all day everyday with no sunscreen! This is what your tires have to endure daily. If you are storing your Trailer for an extended period, make sure that you store the tires in a cool dry place such as a garage or under a shade tree with tire covers to protect your Trailer Tires from the harsh effects of the sun. A thin piece of wood under the tires during storage will extend

your Trailer Tires life.

- Summary Maintenance Tips -
- Keep your tires air pressure at the Maximum PSI recommended on the sidewall of the tire
- Keep a cap on your valve stem to prevent contamination of the internal rubber valve
- Always travel with a spare and check your spare tires air pressure along with the other tires
- If you experience a blowout, slowly move over to the right off the road to change your tire and check the other tires for possible damage
- Don't overload your Trailer Tires. The maximum load is listed on the sidewall of your Trailer Tires
- Give your Trailer Tires a visual check before each trip
- Keep your Trailer Tires in a cool dry place and out of direct sunlight during storage
- Replace your Trailer Tires every 3 to 5 years



Life isn't like a box of chocolates. It's more like a jar of jalapeno's. What you do today, might burn your butt tomorrow.



Political spin....It just depends on how you look at the same story...

Judy Wallman, a professional genealogy researcher in southern California, was doing some personal work on her own family tree. She discovered that Congressman Harry Reid's great-great uncle, Remus Reid, was hanged for horse stealing and train robbery in Montana in 1889. Both Judy and Harry Reid share this common ancestor.

The only known photograph of Remus shows him standing on the gallows in Montana territory:

On the back of the picture Judy obtained during her research is this inscription: 'Remus Reid, horse thief, sent to Montana Territorial Prison 1885, escaped 1887, robbed the Montana Flyer six times. Caught by Pinkerton detectives, convicted and hanged in 1889.'

So Judy recently e-mailed Congressman Harry Reid for information about their great-great uncle. Harry Reid:

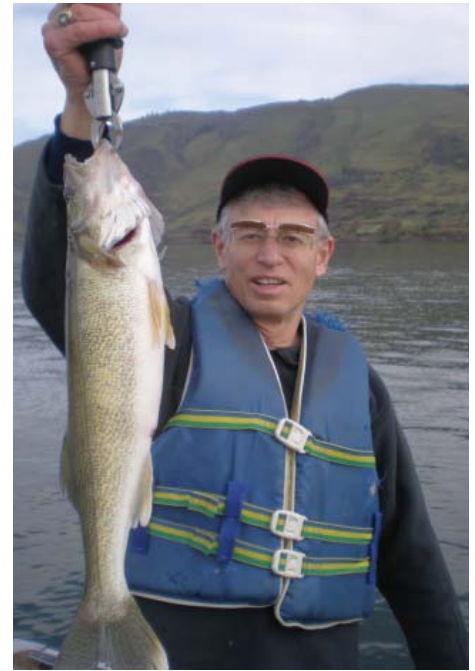
Believe it or not, Harry Reid's staff sent back the following biographical sketch for her genealogy research:

"Remus Reid was a famous cowboy in the Montana Territory. His business empire grew to include acquisition of valuable equestrian assets and intimate dealings with the Montana railroad. Beginning in 1883, he devoted several years of his life to government service, finally taking leave to resume his dealings with the railroad. In 1887, he was a key player in a vital investigation run by the renowned Pinkerton Detective Agency. In 1889, Remus passed away during an important civic function held in his honor when the platform upon which he was standing collapsed."

Now that's how it's done, folks!

That's real POLITICAL SPIN !

Is there a lesson here about politicians and how they relay information to the public?



Jim Gurtisen with one of his four pound walleye that he caught at the last fishout at Maryhill.





**May**  
 May 1 May Day  
 May 4 Board Meeting  
 May 5 Cinco De Mayo  
 May 6 General Meeting  
 May 8,9 Fishout-Multnomah Channel  
 May 9 Mother's Day  
 May 15 Armed Forces Day  
 May 24 Victoria Day  
 May 31 Memorial Day

**June**  
 June 1 Board Meeting  
 June 3 General Meeting  
 June 5,6 Fishout -Multnomah Channel  
 June 14 Flag Day  
 June 20 Father's Day  
 June 29 Board Meeting

**July**  
 July 1 Canada Day  
 General Meeting  
 July 10, 11 Fishout-Multnomah Channel  
 July 4 Independence Day  
 July 14-16 ICAST Show

**August**  
 August 2 British Columbia Day  
 August 3 Board Meeting  
 August 5 General Meeting  
 August 7,8 Fishout- Ough Reef  
 August 14-15 LCWC Classic Walleye Derby  
 August 31 Board Meeting

**September**  
 September 6 Labor Day  
 September 2 General Meeting  
 September 4,5 Fishout- Ough Reef  
 September 18,19 LCWC Club Tournament

**October**  
 October 5 Board Meeting  
 October 7 General Meeting  
 October 9,10 Fishout-Ough Reef  
 October 11 Columbus Day  
 October 31 Halloween

**November**  
 November 2 Election Day  
 Board Meeting  
 November 4 General Meeting  
 November 7 Daylight Savings Time ends  
 November 11 Veteran's Day  
 November 26 Thanksgiving  
 November 30 Board Meeting

**December**  
 December 3 General Meeting  
 Christmas Party  
 December 25 Christmas Day  
 December 31 New Year's Eve



**RAUCH GUIDE SERVICE**  
 ROGER RAUCH  
 LICENSED INLAND MASTER  
 503-880-3780



LOWER COLUMBIA WALLEYE AND SALMON FISHING



## Wildlife Issues

For the past four years I have not handled wildlife problems as I retired from that portion of my business and I got rid of all my equipment.

Unfortunately last night a raccoon got on the roof of my shop and tore a huge hole in it. I was not sure if the raccoon had mad entry into the ceiling of my shop or not. I called on Affordable Wildlife Response, a licensed and extremely professional company that does handle wildlife problems.

After Lynn did the inspection of the roof she informed me that the raccoon was not in the ceiling and was not going to be there because the space was not accomodating to the animal looking for a home to raise its young. She then put a temporary patch on the roof for me that would hold until I could get it fixed correctly. Since it was to rain the next two days Lynn made sure that the patch would not allow rain to enter.

For all the club members that may have a wildlife problem you can count on the people at Affordable Wildlife Response. Let them know you saw this information in the Lower Columbia Walleye Club Newsletter

*Larry McClintock*



**GOT WILDLIFE?**  
 (503) 408 - WILD